

Precision Machined Hydraulic Fluid Fittings

High-pressure AS, MS, NAS and AN fittings and connections



Catalog: HFF-20

FASTENER DIMENSIONS, INC. ISO9001, AS9100 & AS9120 Certified

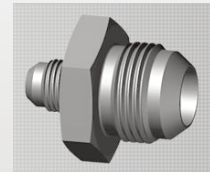
6850 River Road, Pennsauken, New Jersey 08110

WEB: WWW.FASTDIM.COM • PHONE: 718-847-6321 • FAX: 718-847-8414

FDI is an AS9120 certified supplier of AS, MS, NAS and AN hydraulic, flared and flareless, tube fittings. Available alloys are: Titanium, Inconel, Carbon Steel, Monel, Aluminum and all Stainless Steels including 431SS, 15 5 PH and 17 4 PH.

Hydraulic Flared and Flareless Tube Fittings

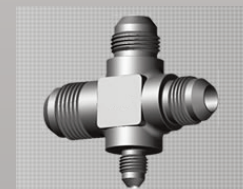
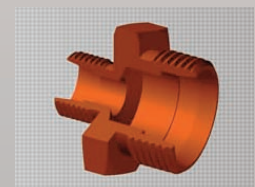
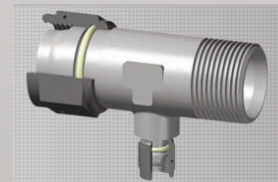
- AS4444 Fittings, 24° Cone Flareless, Fluid Connection, 5000 psi
- AS4841 Fittings, 37° Flared, Fluid Connection
- AS4842 Fittings and Bosses, Pipe Threaded, Fluid Connection
- AS4842/1 Fittings, 37° Flared to Pipe Threaded, Fluid Connection
- AS4842/2 Fittings, Flareless to Flared to Pipe Threaded, Fluid Connection
- AS4843 Fittings, Beaded, Fluid Connection
- AS4843/1 Fittings, Beaded to 37° Flared, Fluid Connection
- AS4843/2 Fittings, Beaded to Pipe Threaded, Fluid Connection
- AS4875 Fittings, Straight Threaded Boss or Flanged, Fluid Connection
- AS4875/1 Fittings, Straight Thread Boss or Flanged to 37° Flared, Fluid Connection
- AS4875/2 Fittings, Flanged to Beaded, Fluid Connection
- AS18280 Fittings, 24° Cone Flareless, Fluid Connection, 3000 psi
- AS85421 Fittings, Tube, Fluid Systems, Separable, Beam Seal, 3000/4000 psi
- General Fittings and Other Machined Components



FDI carries a full line of 3000 psi Fluid Connections in Corrosion-Resistant Steel, Titanium, Aluminum, 15 5 PH and Low Alloy Steel in bar and forged.

3000 psi Standard Fluid Connections

- QPL AS18280
- AS1001 thru AS1010, sizes -04 to -24
- AS1792, sizes -04 thru -20
- AS21900, sizes -04 thru -24
- AS21902, sizes -04 thru -24
- AS21904 thru AS21916, sizes -04 thru -24
- AS21921, sizes -04 thru -24
- AS21923 thru AS21926, sizes -04 thru -24
- AS21937 thru AS21945 sizes vary (*call for size inquiries*)
- AS24405, sizes vary (*call for size inquiries*)
- AS24651 thru AS24652, sizes -04 thru -24
- AS4130 thru AS4141, sizes -04 thru -24
- AS5230 thru AS5232, sizes -04 thru -24
- AS5238 thru AS5242, sizes vary (*call for size inquiries*)
- AS6041 thru AS6050, sizes -04 thru -24
- QPL AS85421
- AS85421 /3 thru /17 in Titanium, sizes 04, 06, 08, 10
- AS4213 in Titanium, sizes 04, 06, 08, 10
- AS4214 in Titanium, sizes 04, 06, 08, 10



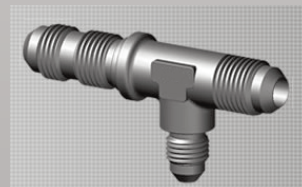
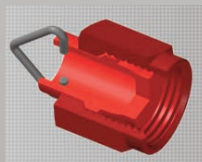
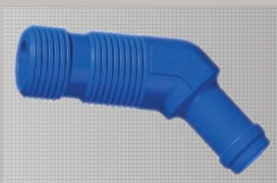
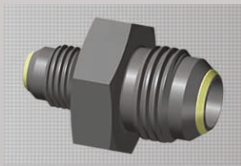
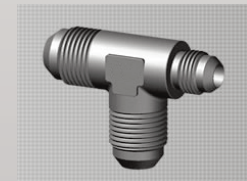
Please contact Fastener Dimensions, Inc. for your specific sizes and to place an order.

PRECISION MACHINED HYDRAULIC FLUID FITTINGS PART NUMBERS

- | | |
|-----------------|------------------------|
| AS95 | AS3000 |
| AS893-AS897 | AS3001 (SILVER PLATED) |
| AS931- AS934 | AS3163 |
| AS1001-AS1010 | AS3166 |
| AS1031-AS1040 | AS3220 |
| AS1100 | AS3226 |
| AS1249-AS1253 | AS4130-AS4141 |
| AS1365-AS1369 | AS4211-AS4214 |
| AS1581-AS1585 | AS4220-AS4224 |
| AS1732 | AS4300-AS4319 |
| AS1790 | AS4323 |
| AS1792 | AS4326-AS4329 |
| AS21900 MS21900 | AS4340 |
| AS21902 MS21902 | AS4346-AS4350 |
| AS21904-AS21916 | AS4370 |
| MS21904-MS21916 | AS4405-AS4411 |
| AS21921 MS21921 | AS4541-AS4542 |
| AS21923-AS21927 | AS4660-AS4665 |
| MS21923-MS21927 | AS4678 |
| AS21938-AS21945 | AS4680 |
| MS21938-MS21945 | AS4681 1 |
| | AS4681 2 |
| | AS4693-AS4696 |
| | AS4702 |
| | AS4807-AS4809 |
| | AS4854-AS4863 |
| | AS4971-AS4973 |
| | AS5002-AS5004 |
| | AS5019 |
| | AS5160-AS5165 |
| | AS5168-AS5170 |

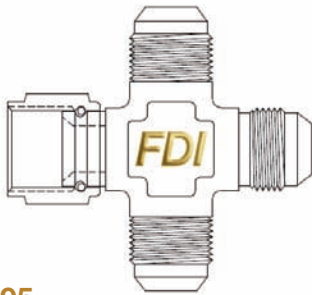


- | |
|----------------------|
| AS5172-AS5176 |
| AS5178-AS5198 |
| AS5205-AS5206 |
| AS5227 |
| AS5230-AS5233 |
| AS5238-AS5242 |
| AS5406 |
| AS604-AS6049 |
| AS85421/3-AS85421/17 |
| AS4213-AS4214 |
| AS9002 |
| NAS1237-NAS1240 |
| NAS1761-NAS1764 |
| NAS424 |
| NAS551-NAS553 |
| NAS555 |
| NAS591 |
| NAS593-NAS596 |
| MS20756 |



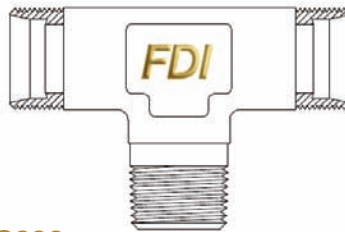
Swivel Fitting Flange Size 12 thru 32
MS20756
Swivel Fitting Flange Size 40 thru 48
MS20756
Swivel Fitting Flange Size 56 thru 112

High-pressure AS, MS, NAS and AN fittings and connections



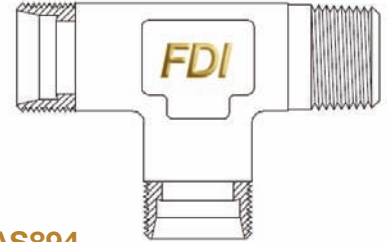
AS95

Fitting Assembly, Cross



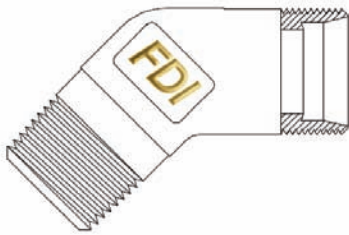
AS893

Fitting, Tee, Standard and Reducer



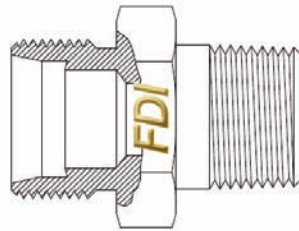
AS894

Fitting, Tee, Standard and Reducer



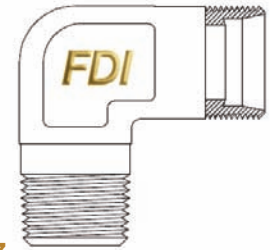
AS895

Fitting Elbow, 45°



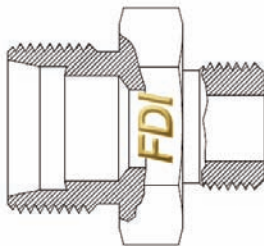
AS896

Fitting, Nipple, Reducer



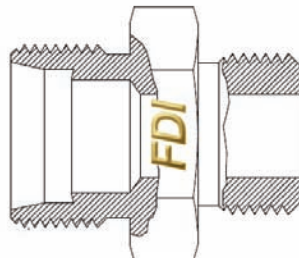
AS897

Fitting Elbow, 90°



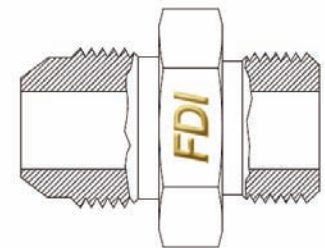
AS931

Fitting, Adapter, Reducer/Expander



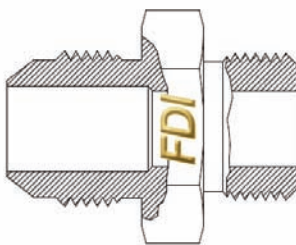
AS932

Fitting, Adapter, Reducer/Expander



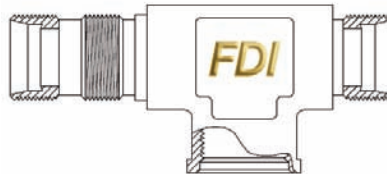
AS933

Fitting, Adapter, Union



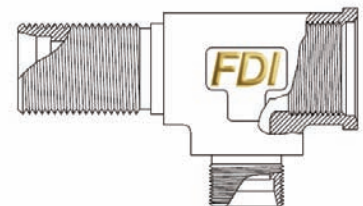
AS934

Fitting, Adapter, Reducer/Expander



AS1001

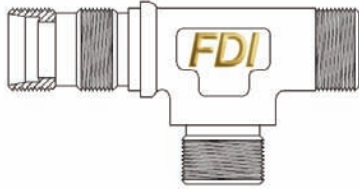
Fitting, Tee, Standard and Reducer



AS1002

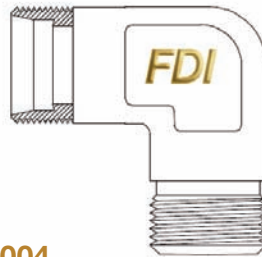
Fitting, Tee, Standard and Reducer

High-pressure AS, MS, NAS and AN fittings and connections



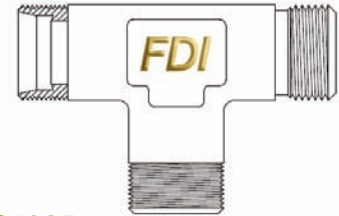
AS1003

Fitting, Tee, Standard and Reducer



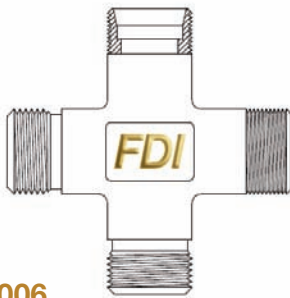
AS1004

Fitting Elbow, 90°



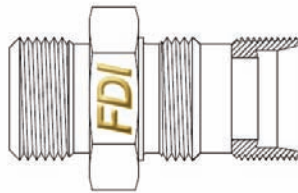
AS1005

Fitting, Tee, Standard and Reducer



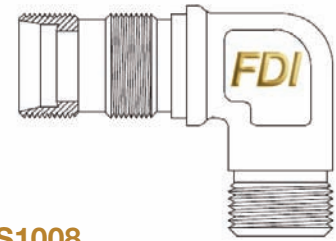
AS1006

Fitting, Cross, Standard and Reducer



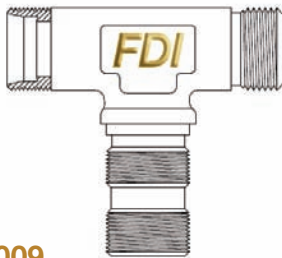
AS1007

Fitting, Union, Standard and Reducer



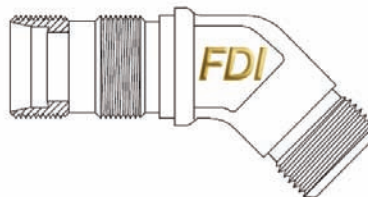
AS1008

Fitting Elbow, 90°



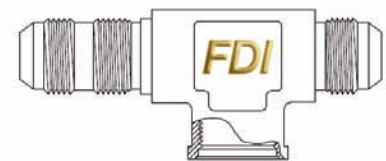
AS1009

Fitting, Tee, Standard and Reducer



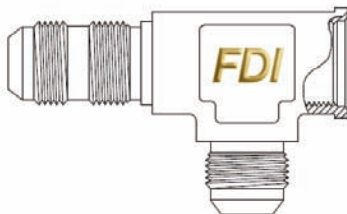
AS1010

Fitting Elbow, 45°



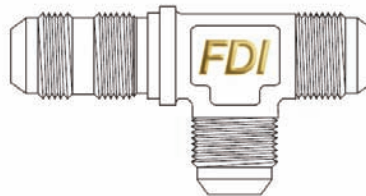
AS1031

Fitting, Tee, Standard and Reducer



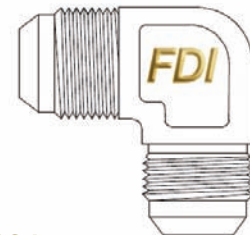
AS1032

Fitting, Tee, Standard and Reducer



AS1033

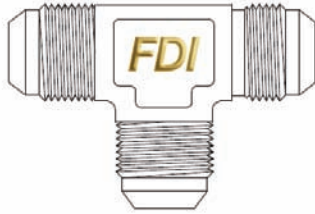
Fitting, Tee, Standard and Reducer



AS1034

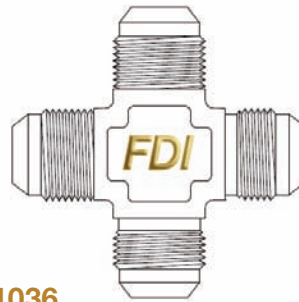
Fitting Elbow, 90°

High-pressure AS, MS, NAS and AN fittings and connections



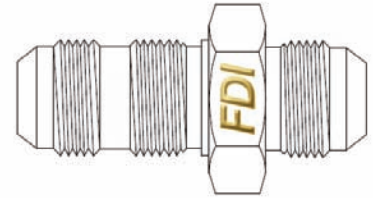
AS1035

Fitting, Tee, Standard & Reducer, Flared



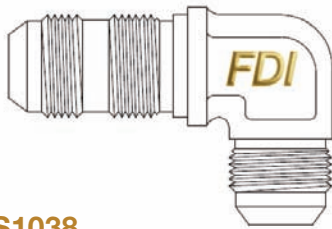
AS1036

Fitting Cross, Standard & Reducer, Flared



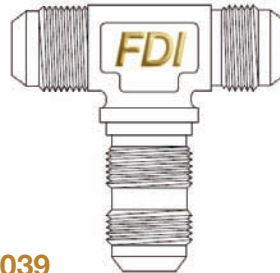
AS1037

Fitting Union, Standard & Reducer, Bulkhead



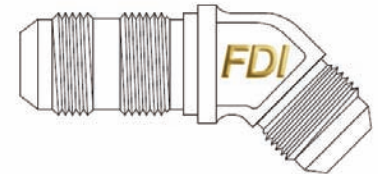
AS1038

Fitting Elbow, 90°, Standard & Reducer



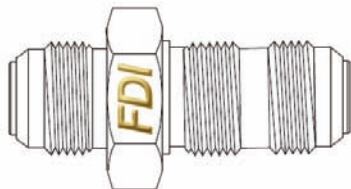
AS1039

Fitting, Tee, Standard & Reducer, Bulkhead



AS1040

Fitting Elbow, 45°, Standard & Reducer



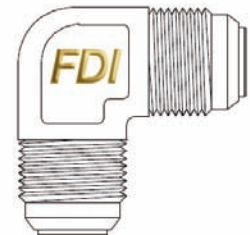
AS1100

Union, Flared Tube, Bulkhead & Universal



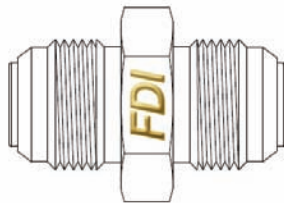
AS1249

Elbow, 45°, Flared Tube for Sealing Ring



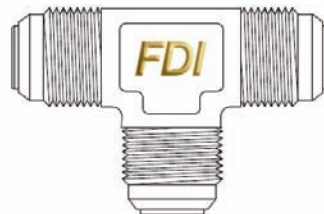
AS1250

Elbow, 90°, Flared Tube for Sealing Ring



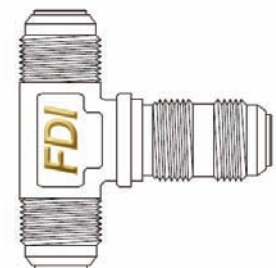
AS1251

Fitting, Union, Flared Tube for Sealing Ring



AS1252

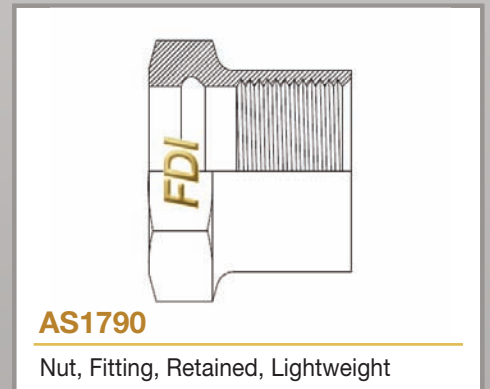
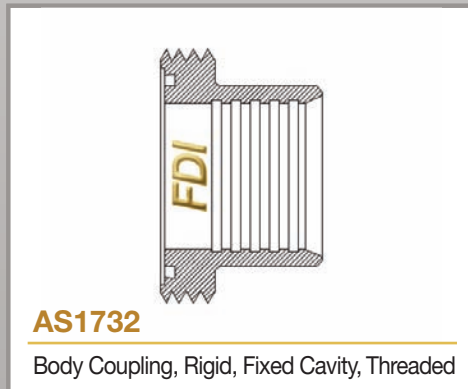
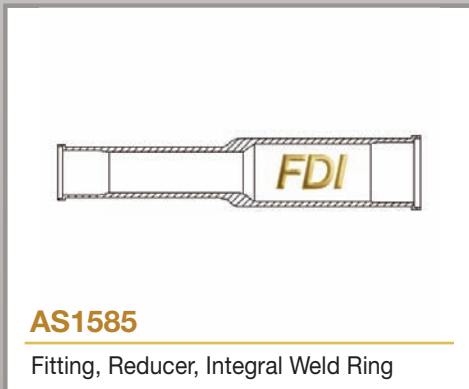
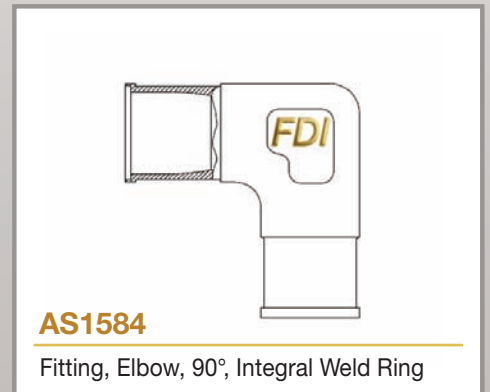
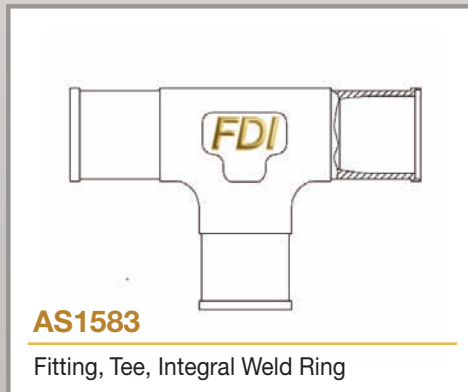
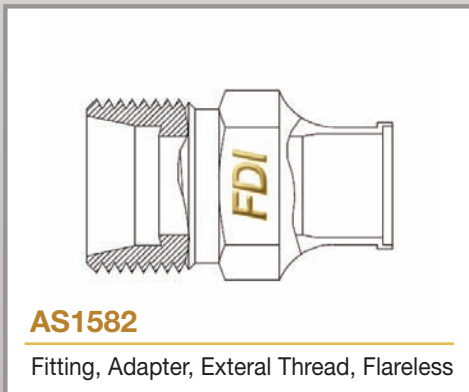
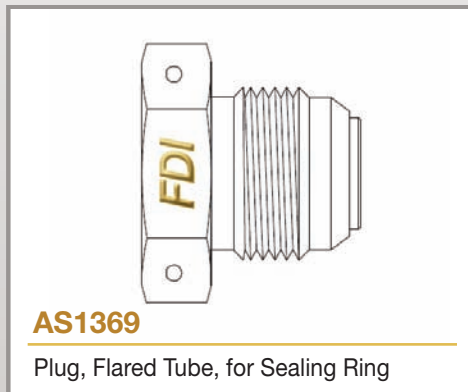
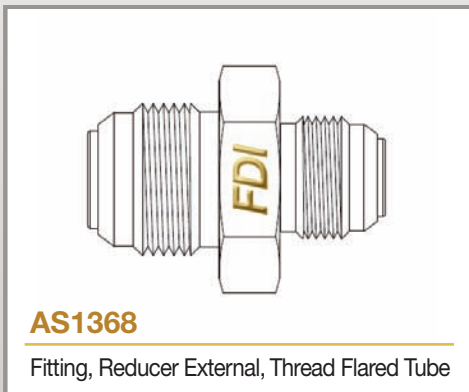
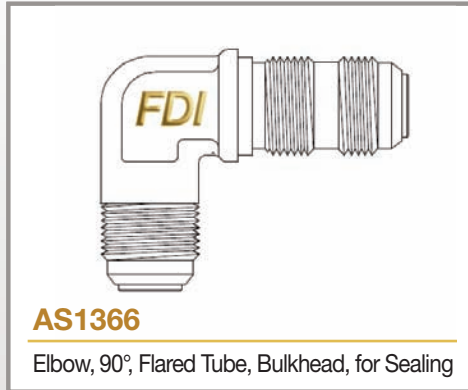
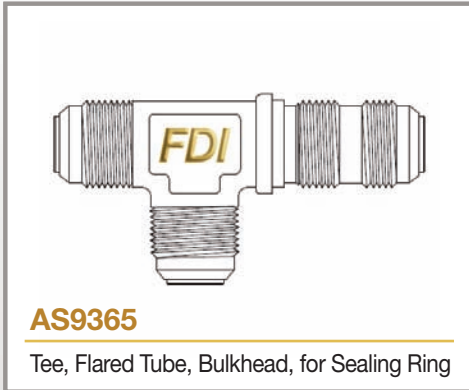
Tee, Flared Tube for Sealing Ring



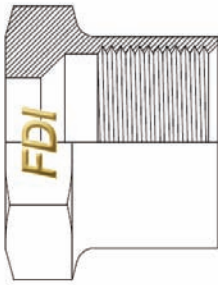
AS1253

Tee, Flared Tube, Bulkhead, for Sealing Ring

High-pressure AS, MS, NAS and AN fittings and connections



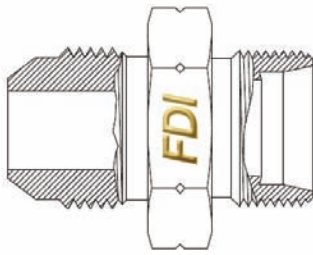
High-pressure AS, MS, NAS and AN fittings and connections



AS1790

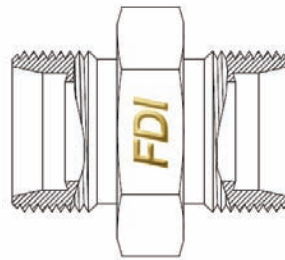
Nut, Fitting, Lightweight, Flareless

High-pressure AS, MS, NAS and AN fittings and connections



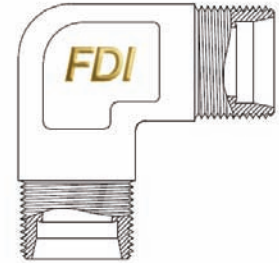
AS21900 **MS21900**

Adapter, Flareless Tube to Flared Tube



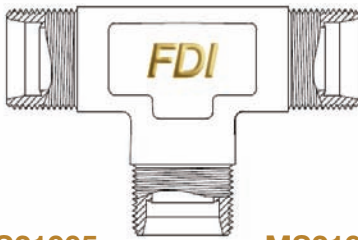
AS21902 **MS21902**

Union, Flareless Tube



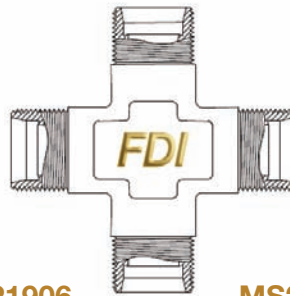
AS21904 **MS21904**

Elbow, Flareless Tube, 90°



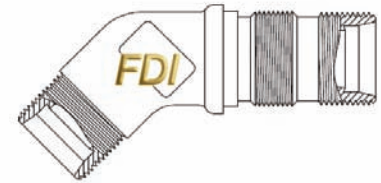
AS21905 **MS21905**

Tee, Flareless Tube



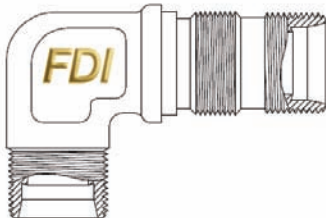
AS21906 **MS21906**

Cross, Flareless Tube



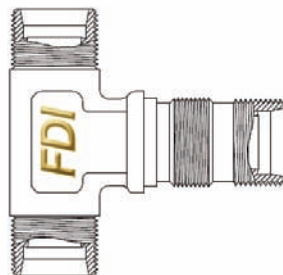
AS21907 **MS21907**

Elbow, Bulkhead Univ., 45°, Flareless Tube



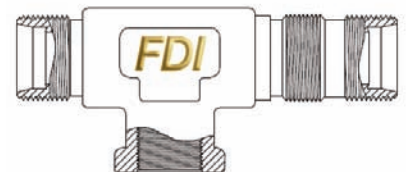
AS21908 **MS21908**

Elbow, Bulkhead & Univ. 90°, Flareless Tube



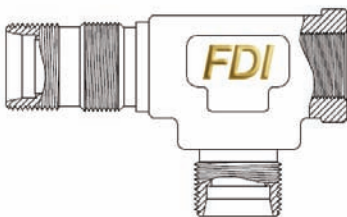
AS21909 **MS21909**

Tee, Bulkhead & Universal, Flareless Tube



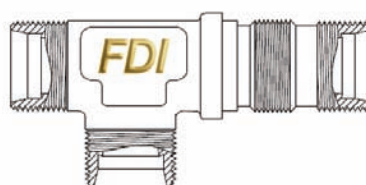
AS21910 **MS21910**

Tee, Bulkhead, Flareless Tube, Internal Thread



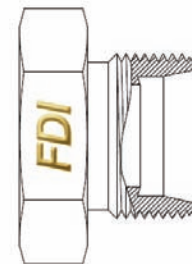
AS21911 **MS21911**

Tee, Bulkhead, Flareless Tube, Internal Thread



AS21912 **MS21912**

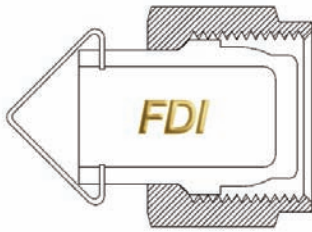
Tee, Flareless Tube with Bulkhead on Run



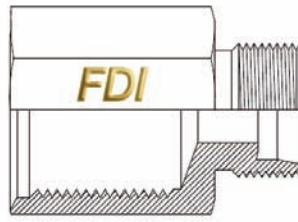
AS21913 **MS21913**

Plug, Flareless Tube

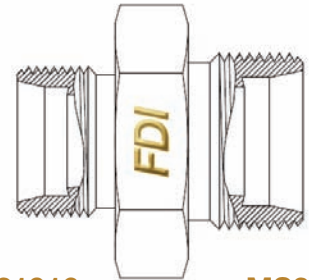
High-pressure AS, MS, NAS and AN fittings and connections



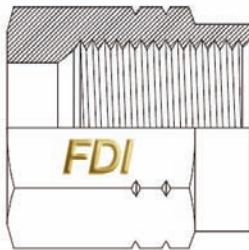
AS21914 **MS21914**
Cap, Pressure Seal, Flareless Tube Fitting



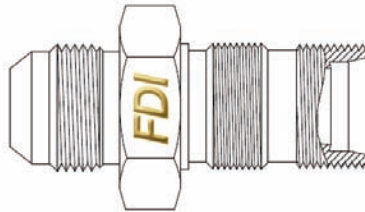
AS21915 **MS21915**
Adapter, Straight, Tube Boss



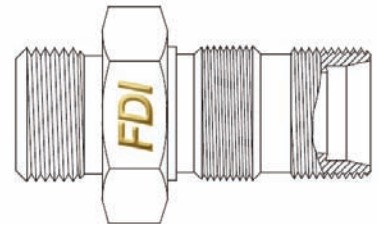
AS21916 **MS21916**
Reducer, External, Thread, Flareless Tube



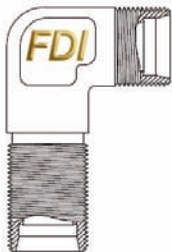
AS21921 **MS21921**
Nut, Sleeve Coupling, Flareless



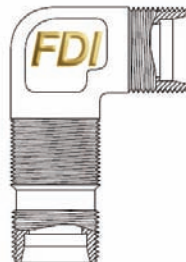
AS21923 **MS21923**
Adapter, Flareless Tube to Flared Tube



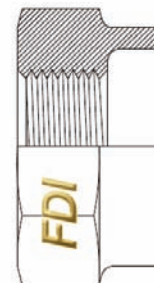
AS21924 **MS21924**
Union, Flareless Tube, Bulkhead & Universal



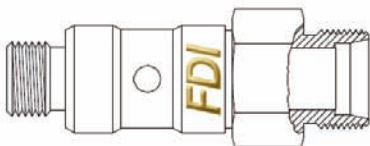
AS21925 **MS21925**
Elbow 90°, Univ., Flareless Tube, High-Profile



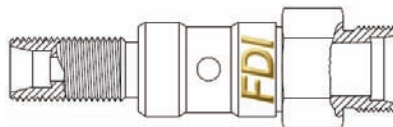
AS21926 **MS21926**
Elbow 90°, Univ., Flareless Tube, Low-Profile



AS21927 **MS21927**
Nut, Cluster Fitting, Retainer



AS21938 **MS21938**
Bolt, Cluster Fitting, Single Port, Flareless

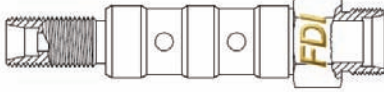


AS21939 **MS21939**
Bolt, Cluster Fitting, Single Port, Through



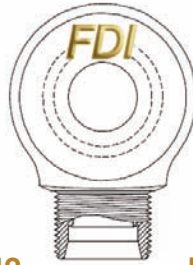
AS21940 **MS21940**
Bolt Cluster Fitting, Double Port, Flareless

High-pressure AS, MS, NAS and AN fittings and connections



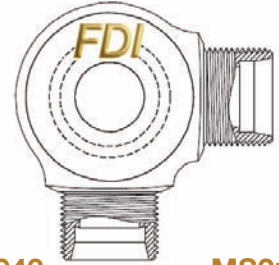
AS21941 **MS21941**

Bolt, Cluster Fitting, Double Port, Through



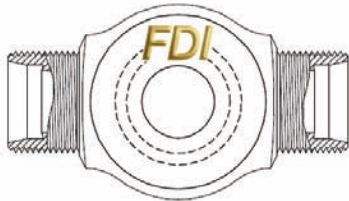
AS21942 **MS21942**

Body Cluster Fitting, One-way, Flareless



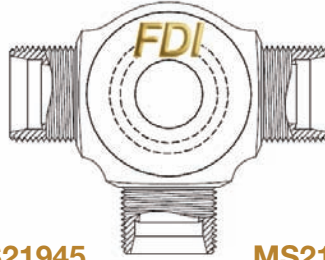
AS21943 **MS21943**

Body, Cluster Fitting, Two-way, 90°, Flareless



AS21944 **MS21944**

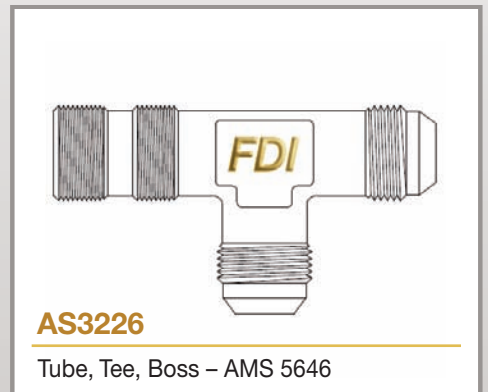
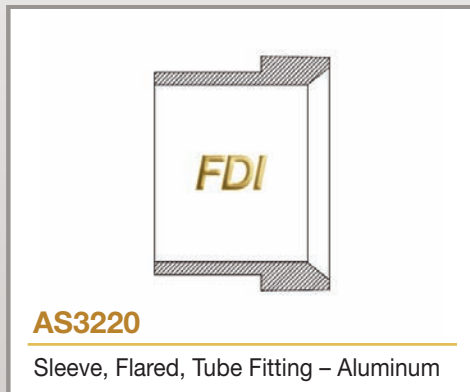
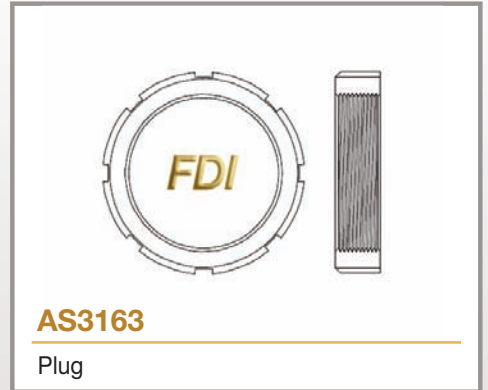
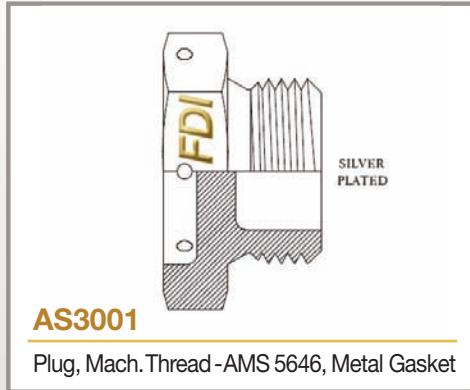
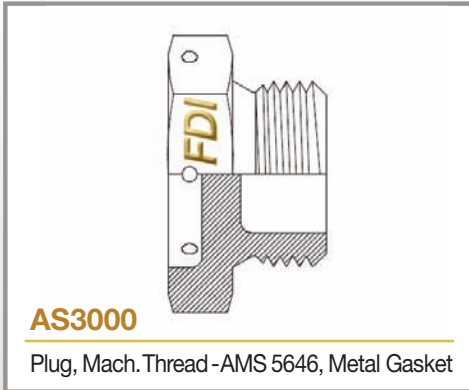
Body Cluster Fitting, Two-way, 180°, Flareless



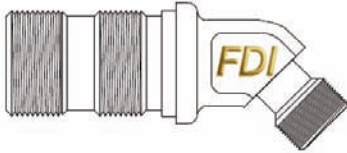
AS21945 **MS21945**

Body, Cluster Fitting, Three-way, Flareless

High-pressure AS, MS, NAS and AN fittings and connections

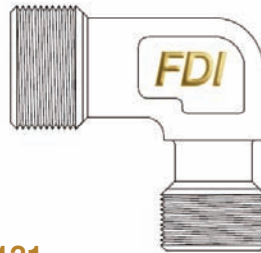


High-pressure AS, MS, NAS and AN fittings and connections



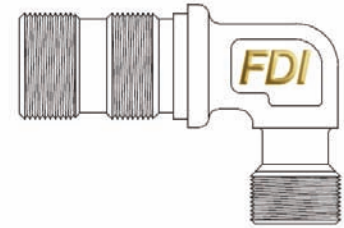
AS4130

Elbow, 45°, Bulkhead, Reduced Body, Flareless



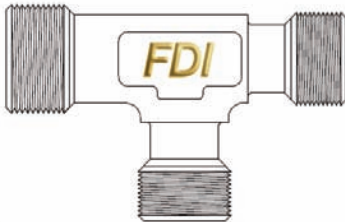
AS4131

Elbow, 90°, Reduced Body, Flareless



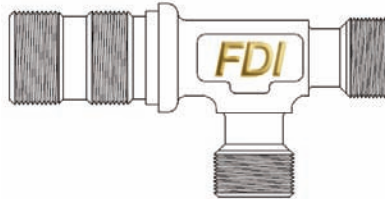
AS4132

Elbow, 90°, Bulkhead, Reduced Body, Flareless



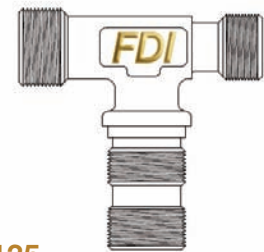
AS4133

Tee, Reduced Body, Flareless



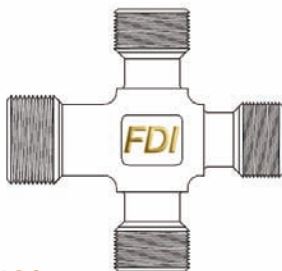
AS4134

Tee, Bulkhead on Run, Reduced Body, Flareless



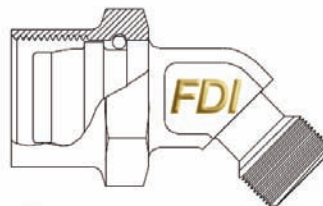
AS4135

Tee, Bulkhead on Side, Reduced Body, Flareless



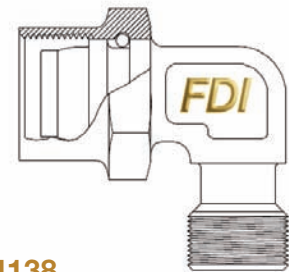
AS4136

Cross, Reduced Body, Flareless



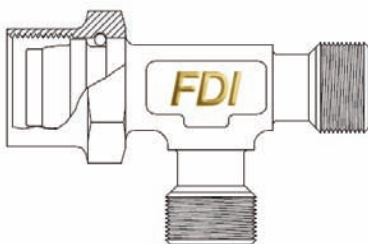
AS4137

Elbow, 45°, Swivel, Reduced Body, Flareless



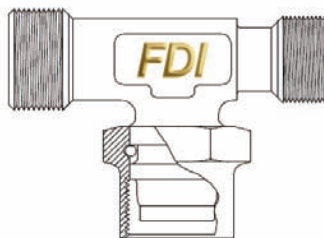
AS4138

Elbow, 90°, Swivel, Reduced Body, Flareless



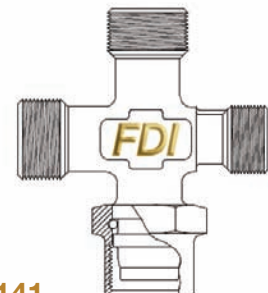
AS4139

Tee, Swivel on Run, Reduced Body, Flareless



AS4140

Tee, Swivel on Side, Reduced Body, Flareless



AS4141

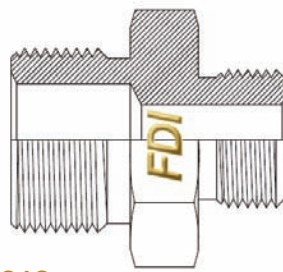
Cross, Swivel on Side, Reduced Body, Flareless

High-pressure AS, MS, NAS and AN fittings and connections



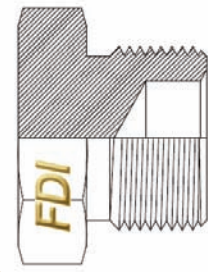
AS4211

Fitting, Cross, Beam Seal



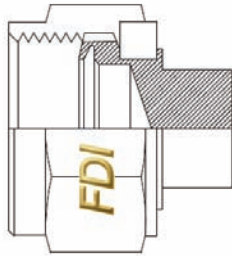
AS4212

Fitting, Union, Reducer, Beam Seal



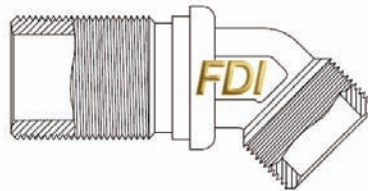
AS4213

Fitting, Plug, Beam Seal, Hydraulic



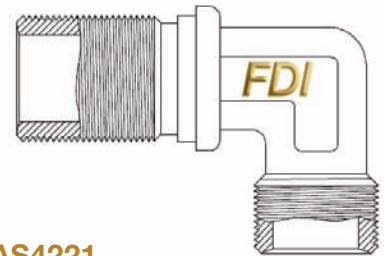
AS4214

Fitting Cap Assembly, Beam Seal, Hydraulic



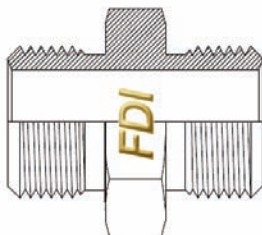
AS4220

Fitting, Elbow, 45°, Beam Seal, Bulkhead



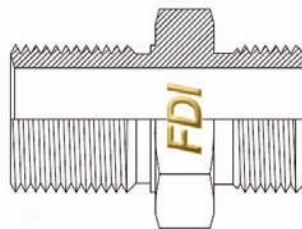
AS4221

Fitting, Elbow, 90°, Beam Seal, Bulkhead



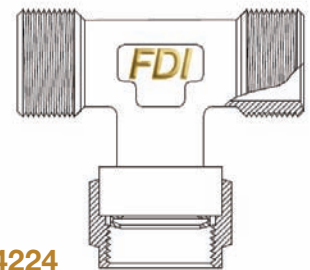
AS4222

Fitting, Union, Beam Seal



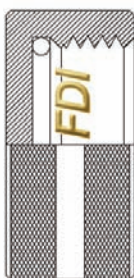
AS4223

Fitting, Union, Bulkhead, Beam Seal



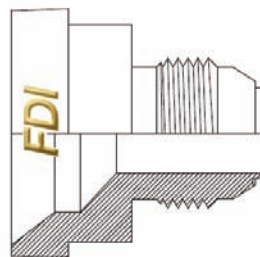
AS4224

Fitting, Assembly, Tee, Retained Nut on Side



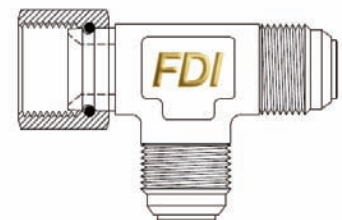
AS4300

Fitting, Assembly



AS4301

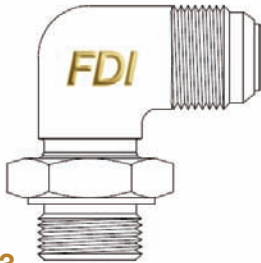
Reducer Adapter, Conical End to Flared Tube



AS4302

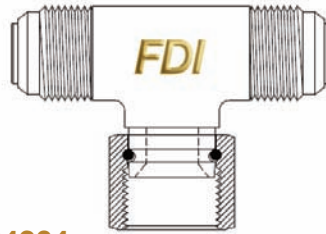
Tee Assy., Flared Tube, Retained Nut on Run

High-pressure AS, MS, NAS and AN fittings and connections



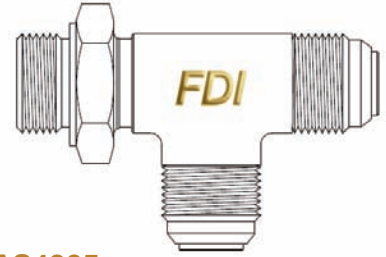
AS4303

Elbow Assy., 90°, Flared Tube to Adjustable



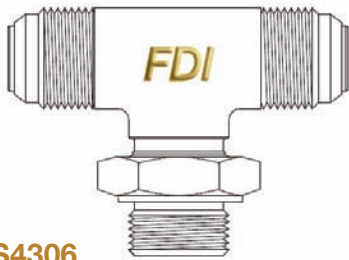
AS4304

Tee Assy., Flared Tube, Retained Nut-on Side



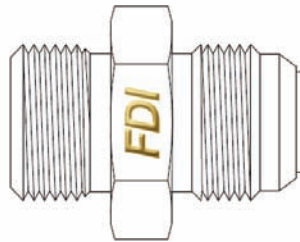
AS4305

Tee Assy., Flared Tube, Adjustable End-On



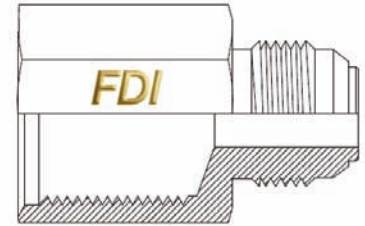
AS4306

Tee Assy., Flared Tube, Adjustable End-On



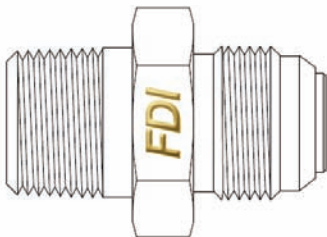
AS4307

Adapter, Flared Tube to Boss, for Seal Ring



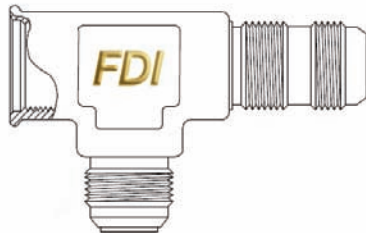
AS4308

Bushing Screw Thread Expander, for Seal Ring



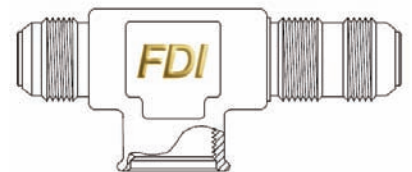
AS4309

Nipple Flared Tube to Pipe Thread for Seal Ring



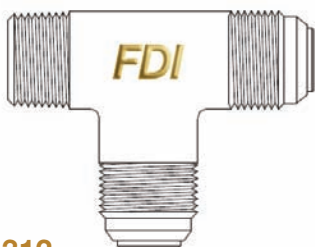
AS4310

Tee-Flared Tube, Internal Thread-on Run



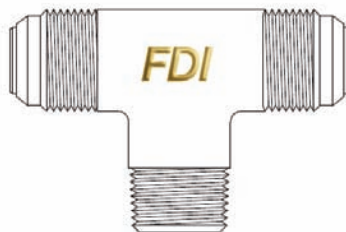
AS4311

Tee-Flared Tube, Internal Thread-on Side



AS4312

Tee-Flared Tube with Pipe, Thread-on Run



AS4313

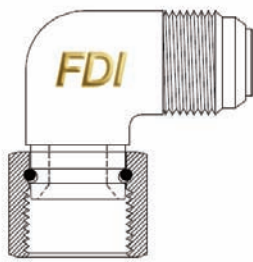
Tee-Flared Tube with Pipe, Thread-on Side



AS4314

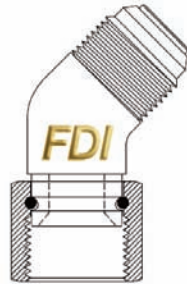
Elbow Assy., 45°, Flared Tube to Adjustable End

High-pressure AS, MS, NAS and AN fittings and connections



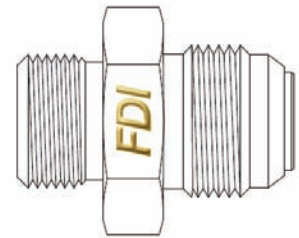
AS4315

Elbow Assy., 90°, Flared Tube to Retained Nut



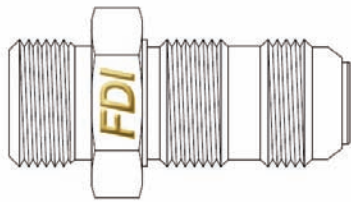
AS4316

Elbow Assy., 45°, Flared Tube to Retained Nut



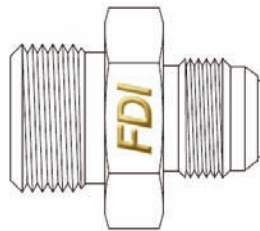
AS4317

Reducer, Adapter, Flared Tube to Boss



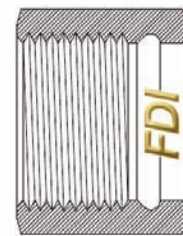
AS4318

Adapter, Flared Tube .375 Bulkhead to Boss



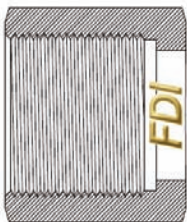
AS4319

Expander, Adapter, Flared Tube to Boss



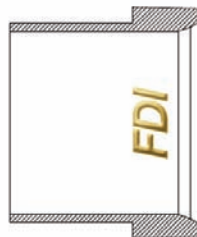
AS4323

Nut, Retained, for Flared Tube Fittings



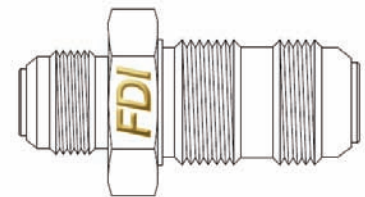
AS4326

Nut, Coupling



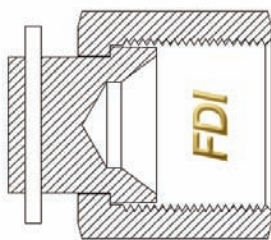
AS4327

Sleeve, Flared Tube Fitting



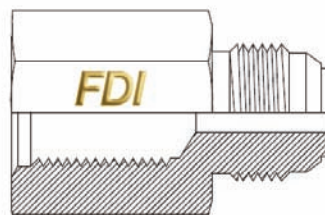
AS4328

Union, Reducer, Bulkhead, Flared Tube



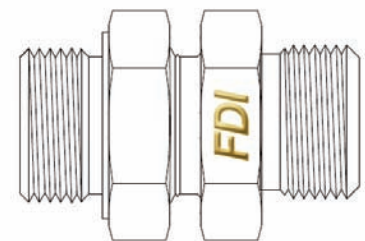
AS4329

Cap, Assy., Pressure Seal, Flared Tube Fitting



AS4340

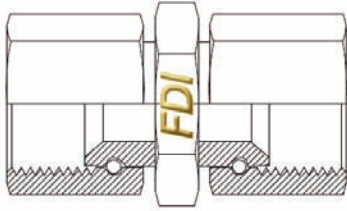
Bushing-Screw Thread Reducer, for Seal Ring



AS4346

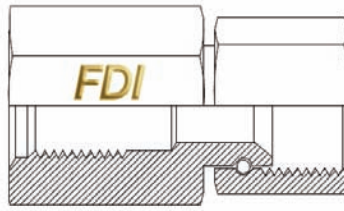
Union, Assembly, Adjustable End

High-pressure AS, MS, NAS and AN fittings and connections



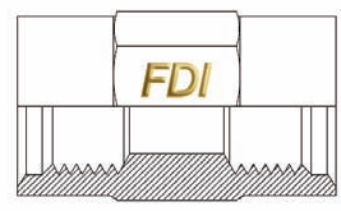
AS4347

Union, Assembly, Double Retained Nut



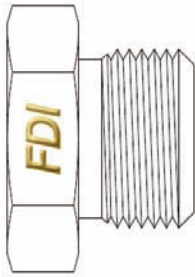
AS4348

Adapter Assembly, Retained Nut to Boss



AS4349

Coupling, Tube



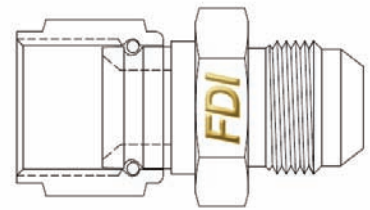
AS4350

Fitting



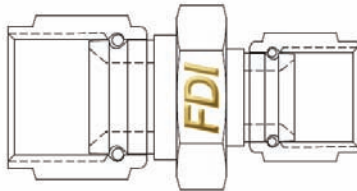
AS4370

Nut, Fitting, Retained



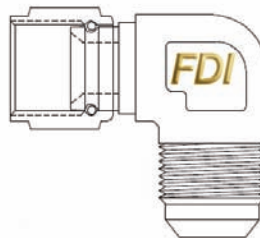
AS4405

Fitting, Assy., Adapter, Reducer & Nonreducer



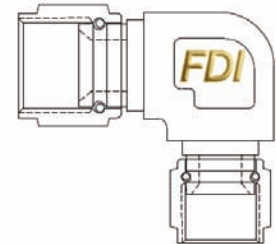
AS4406

Fitting, Assy., Union, Reducer & Nonreducer



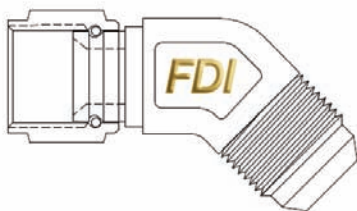
AS4407

Fitting, Assy., Elbow 90°, Reducer & Nonreducer



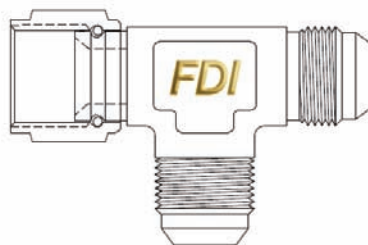
AS4408

Fitting, Assy., Elbow 90°, Reducer & Nonreducer



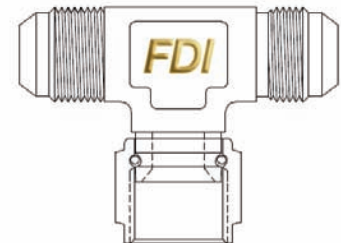
AS4409

Fitting, Assy., Elbow 45°, Reducer & Nonreducer



AS4410

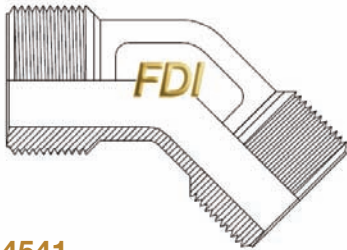
Fitting, Assy., Tee, Reducer & Nonreducer



AS4411

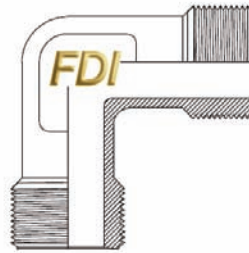
Fitting, Assy., Tee, Reducer & Nonreducer

High-pressure AS, MS, NAS and AN fittings and connections



AS4541

Elbow, 45°, Beam Seal, Male 4000psi, Hydraulic



AS4542

Elbow, 90°, Beam Seal, Male 4000psi, Hydraulic



AS4660

Nut, Short Flareless



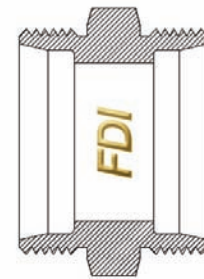
AS4661

Fitting, Assembly, Cap, Short Flareless



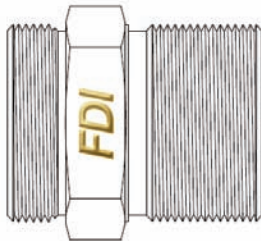
AS4662

Fitting, Plug, Short Flareless



AS4663

Fitting, Union, Short Flareless



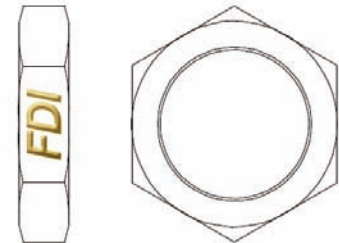
AS4664

Fitting, Union, Bulkhead, Short Flareless



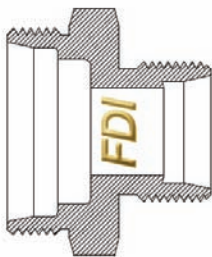
AS4665

Fitting, Adapter, Union & Reducer, Short



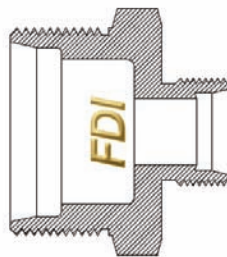
AS4678

Fitting, Nut



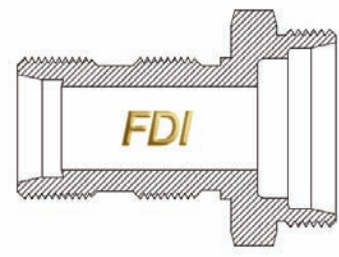
AS4680

Fitting, Union, Reducer, Short Flareless to Boss



AS4681-1

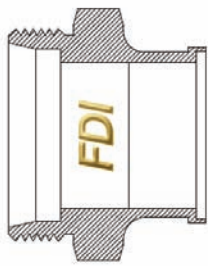
Fitting, Union, Reducer/Expander Bulkhead



AS4681-2

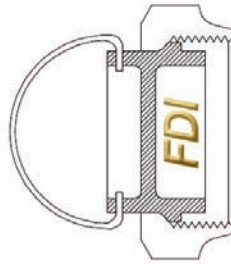
Fitting, Union, Reducer/Expander Bulkhead

High-pressure AS, MS, NAS and AN fittings and connections



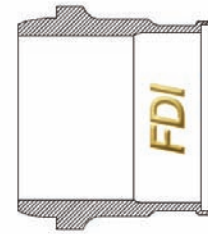
AS4693

Union, Tube End, External Thread to Weld



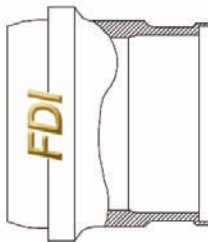
AS4694

Fitting, Assembly, Cap, Hollow End, Acorn



AS4695

Sleeve, Tube End, Acorn to Weld, Short Flareless



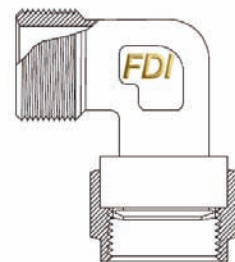
AS4696

Fitting, Sleeve, Short Acorn to Weld Tube End



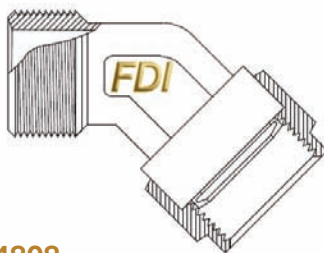
AS94702

Nut, Retained, Short Flareless



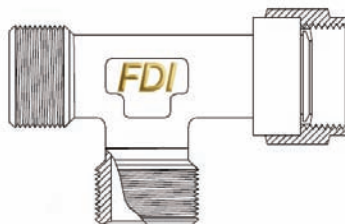
AS4807

Fitting, Assy., Elbow 90°, Beam Seal, Retained



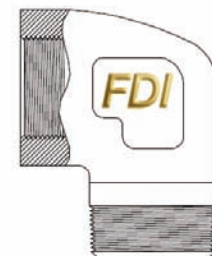
AS4808

Fitting, Assy., Elbow 45°, Beam Seal, Retained



AS4809

Fitting, Assy., Tee, Beam Seal, Retained Nut on Run



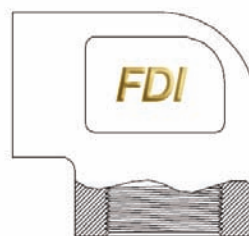
AS4854

Nut, Fitting, Retained



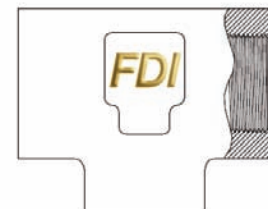
AS4855

Fitting, Assy., Adapter, Reducer & Nonreducer



AS4856

Fitting, Assy., Union, Reducer & Nonreducer



AS4857

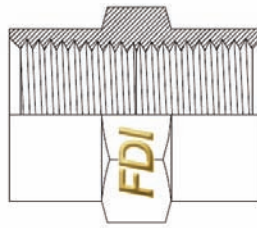
Fitting, Assy., Elbow 90°, Reducer & Nonreducer

High-pressure AS, MS, NAS and AN fittings and connections



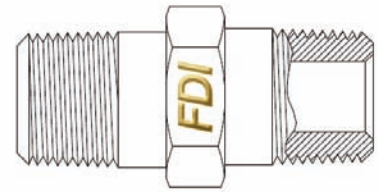
AS4858

Fitting, Assy., Elbow 90°, Reducer & Nonreducer



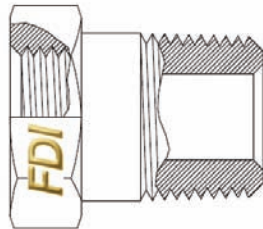
AS4859

Fitting, Assy., Elbow 45°, Reducer & Nonreducer



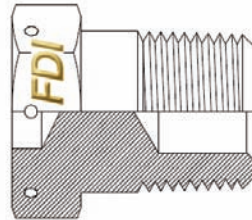
AS4860

Fitting, Assembly, Tee, Reducer & Nonreducer



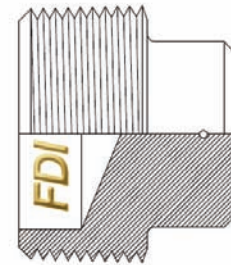
AS4861

Fitting, Assembly, Tee, Reducer & Nonreducer



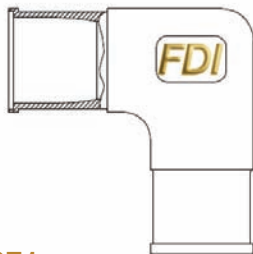
AS4862

Plug, Pipe, External Thread, Hex Head



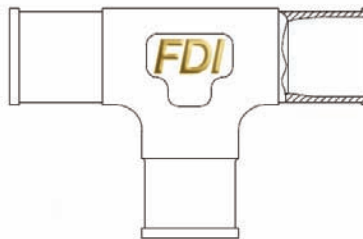
AS4863

Plug, Pipe, External Thread



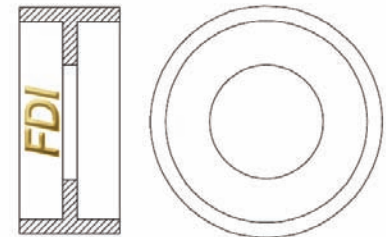
AS4971

Fitting, Assembly, Cap, Short Flareless



AS4972

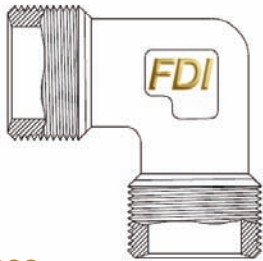
Fitting, Plug, Short Flareless



AS4973

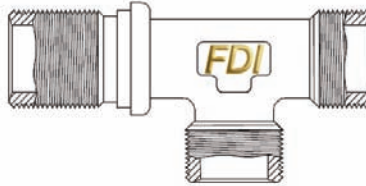
Fitting, Union, Short Flareless

High-pressure AS, MS, NAS and AN fittings and connections



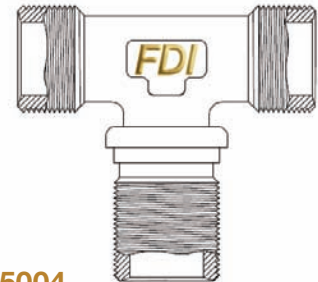
AS5002

Fitting, Elbow, 90°, Beam Seal



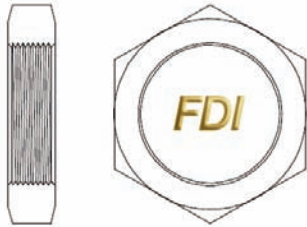
AS5003

Fitting, Tee, Beam Seal, Bulkhead on Run



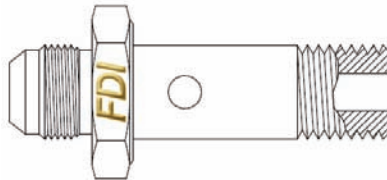
AS5004

Fitting, Tee, Beam Seal, Bulkhead on Side



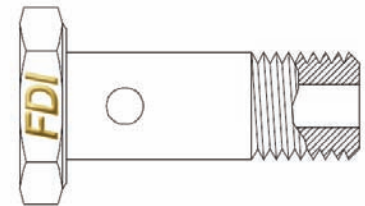
AS5019

Nut, Bulkhead, Beam Seal Fitting



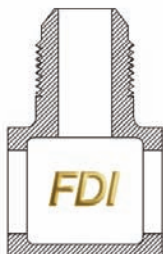
AS5160

Fitting, Bolt, Flared



AS5161

Fitting, Bolt, Fluid Passage



AS5162

Fitting, Connector, Mult. Fluid Pressure Line



AS5163

Fitting, Connector, Mult. Fluid Pressure Line



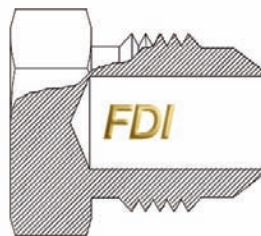
AS5164

Fitting, Connector, Mult. Fluid Pressure Line



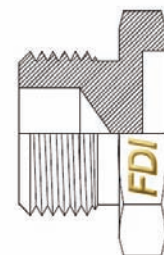
AS5165

Fitting, Connector, Mult. Fluid Pressure Line Tee



AS5168

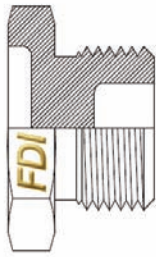
Fitting, Plug, Tube End, Flared



AS5169

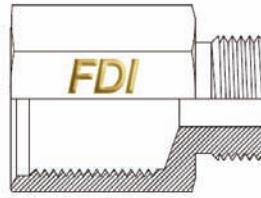
Fitting, Port Plug and Bleeder

High-pressure AS, MS, NAS and AN fittings and connections



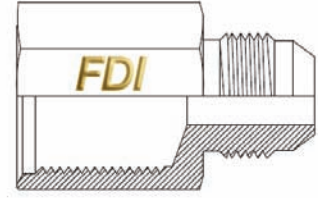
AS5170

Fitting, Plug, Port, Straight Thread, O-Ring Seal



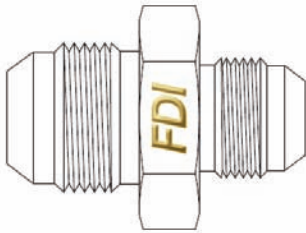
AS5172

Fitting, Adapter, Port, Reducer



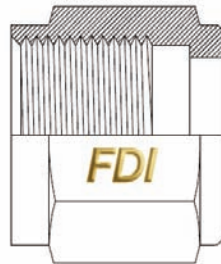
AS5173

Fitting, Bushing, Port, Reducer



AS5174

Fitting, Union and Reducer, Flared



AS5175

Nut, Coupling, Flared



AS5176

Nut, Sleeve, Flared



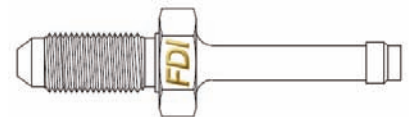
AS5178

Fitting, Nut, Bulkhead



AS5179

Nut, Fitting, Port



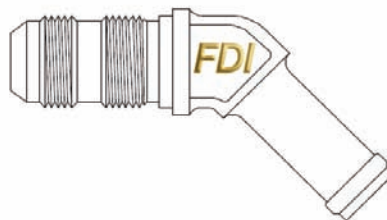
AS5180

Fitting, Adapter, Bulkhead, Flared to Hose



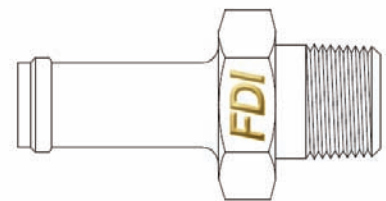
AS5181

Fitting, Elbow 90°, Bulkhead, Flared to Hose



AS5182

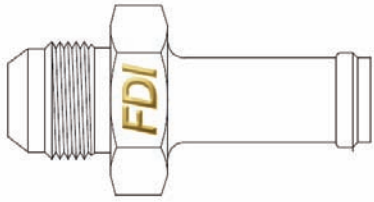
Fitting, Elbow 45°, Bulkhead, Flared to Hose



AS5183

Fitting, Adapter, Hose to Straight Pipe

High-pressure AS, MS, NAS and AN fittings and connections



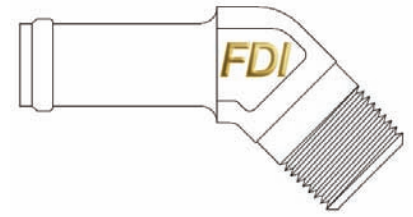
AS5184

Fitting, Adapter, Flared to Hose



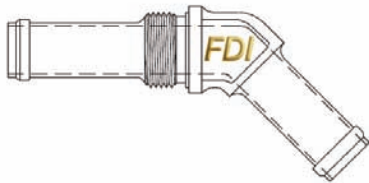
AS5185

Fitting, Elbow 90°, Pipe to Hose



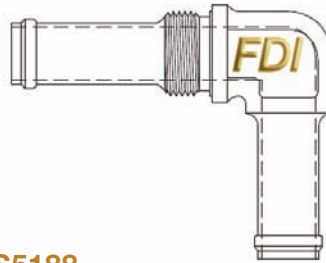
AS5186

Fitting, Elbow 45°, Pipe to Hose



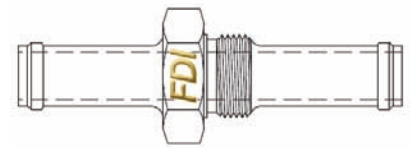
AS5187

Fitting, Elbow 45°, Bulkhead, Hose



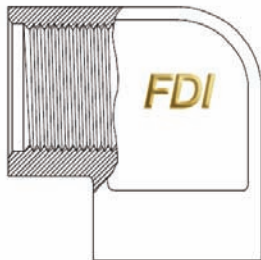
AS5188

Fitting, Elbow 90°, Bulkhead, Hose



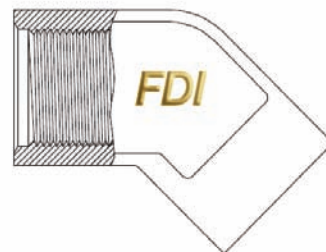
AS5189

Fitting, Adapter, Hose



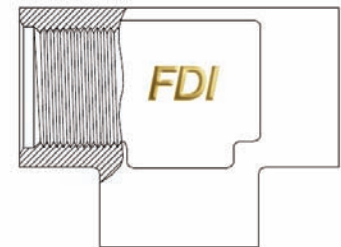
AS5190

Fitting, Elbow 90°, Internal Straight Thread



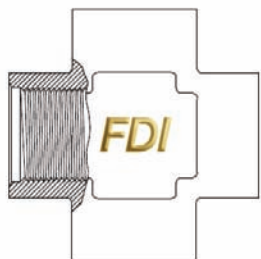
AS5191

Fitting, Elbow 45°, Internal Straight Thread



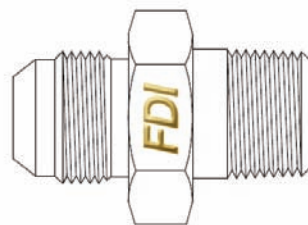
AS5192

Fitting, Tee, Internal Straight Thread Port



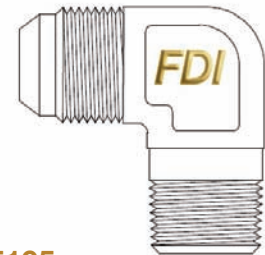
AS5193

Fitting, Cross, Internal Straight Thread Port



AS5194

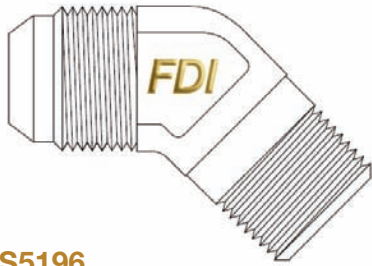
Fitting, Adapter, Straight Pipe to Flared



AS5195

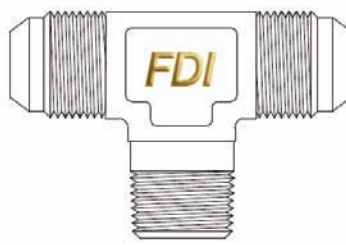
Fitting, Elbow 90°, Flared to Pipe

High-pressure AS, MS, NAS and AN fittings and connections



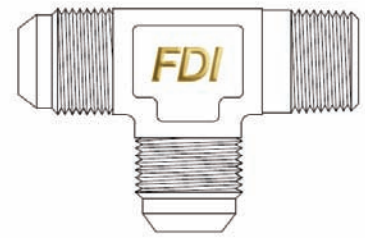
AS5196

Fitting, Elbow 45°, Flared to Pipe



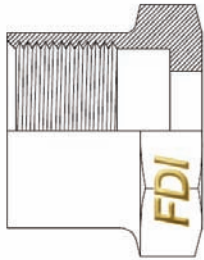
AS5197

Fitting, Tee, Flared to Pipe on Side



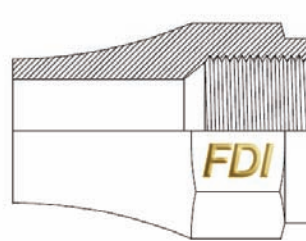
AS5198

Fitting, Tee, Flared to Pipe on Run



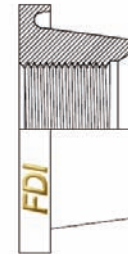
AS5205

Nut, Fitting, Engine, Flared



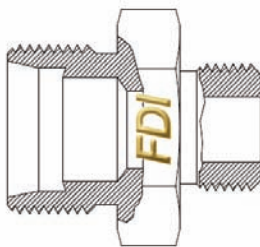
AS5206

Nut, Flared, Long



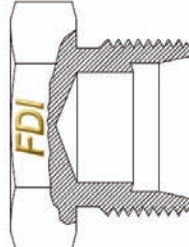
AS5227

Flange, Straight Thread Port, Weld



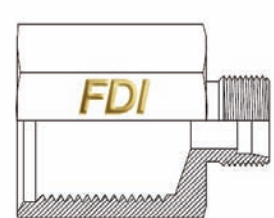
AS5230

Fitting, Union & Reducer, Flareless



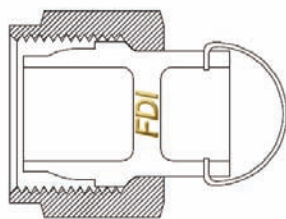
AS5231

Nut, Fitting, Port



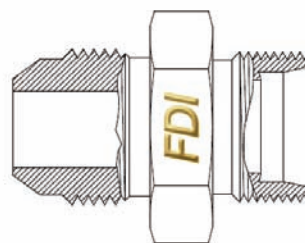
AS5232

Fitting, Adapter, Bulkhead, Flared to Hose



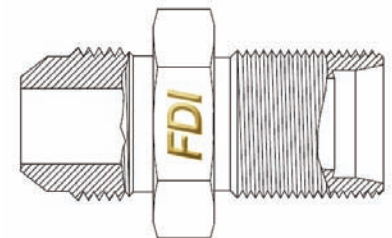
AS5233

Fitting, Elbow 90°, Bulkhead, Flared to Hose



AS5238

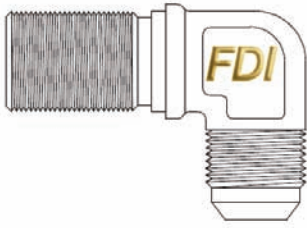
Fitting, Adapter, Bulkhead, Flareless to Flared



AS5239

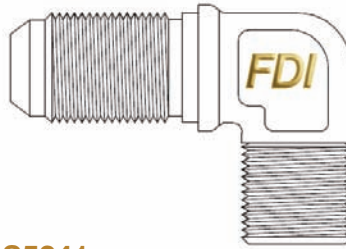
Fitting, Adapter, Bulkhead, Flareless to Flared

High-pressure AS, MS, NAS and AN fittings and connections



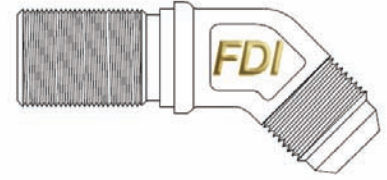
AS5240

Fitting, Elbow 90°, Bulkhead, Flareless to Flared



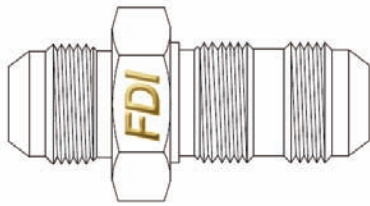
AS5241

Fitting, Elbow 90°, Bulkhead, Flareless to Flared



AS5242

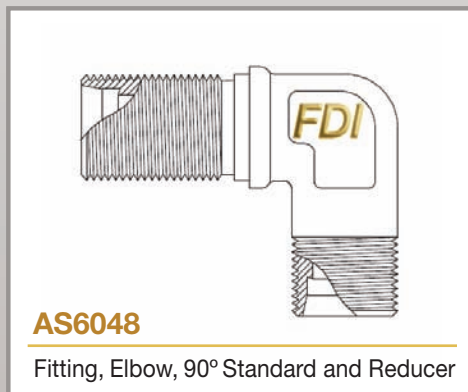
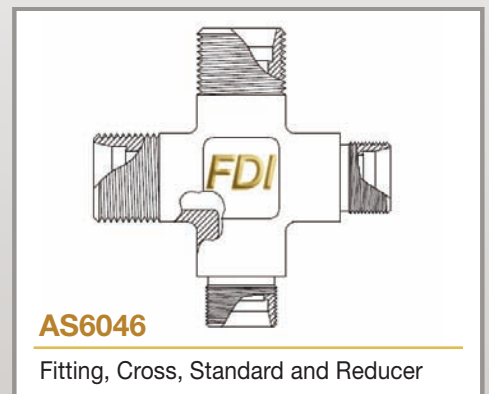
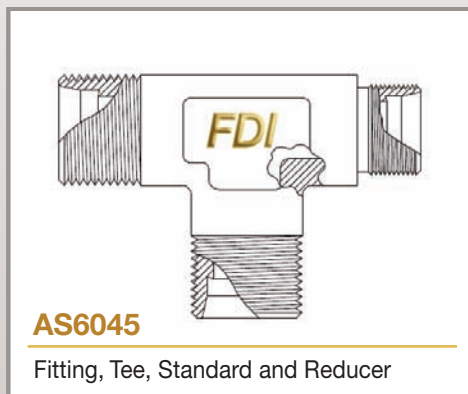
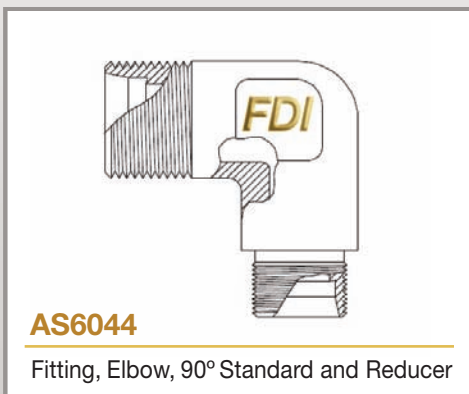
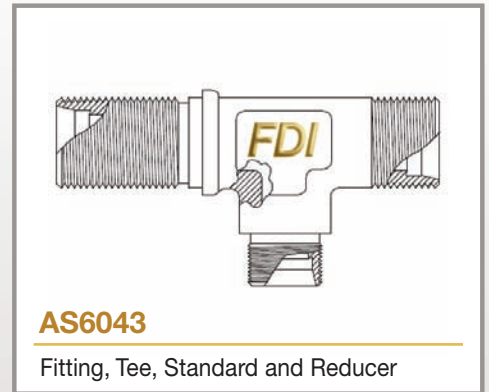
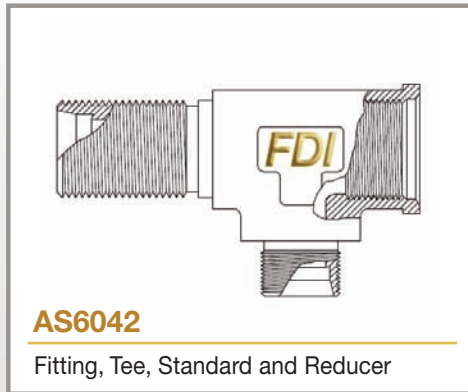
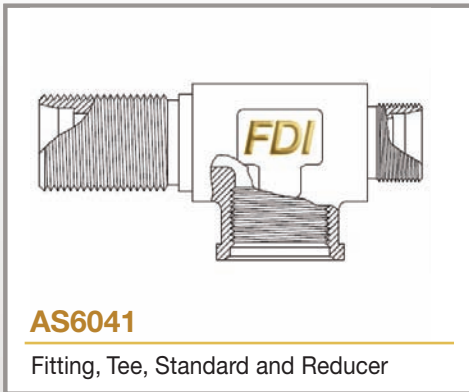
Fitting, Elbow 45°, Bulkhead, Flareless to Flared



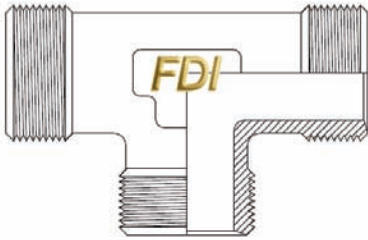
AS5406

Fitting, Union, Tube, .375 Bulkhead

High-pressure AS, MS, NAS and AN fittings and connections

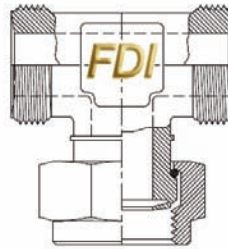


High-pressure AS, MS, NAS and AN fittings and connections



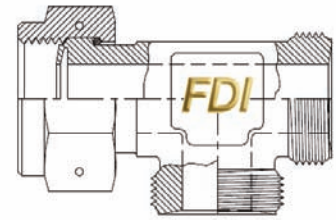
AS85421/3

Fitting, Tee, Reducer, Beam Seal, 3 Male Ends



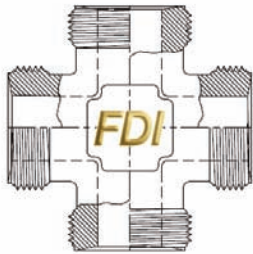
AS85421/4

Fitting, Tee, Reducer & Non-Reducer, Beam Seal



AS85421/5

Fitting, Tee, Reducer & Non-Reducer, Beam Seal



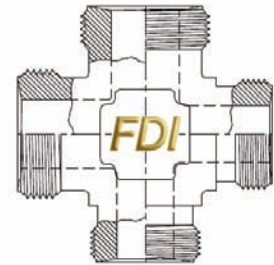
AS85421/6

Fitting, Cross, Beam Seal, Male Ends



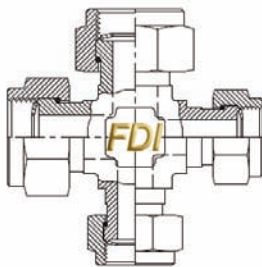
AS85421/7

Fitting Assy., Cross, Beam Seal, 4 Female Ends



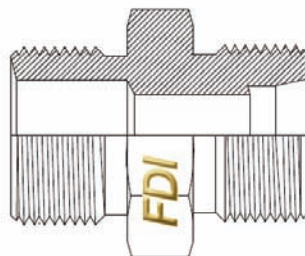
AS85421/8

Fitting, Cross, Reducer, Beam Seal, 4 Male Ends



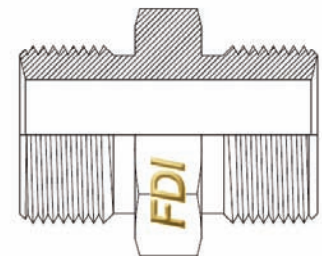
AS85421/9

Fitting Assy., Cross, Reducer, 4 Female Ends



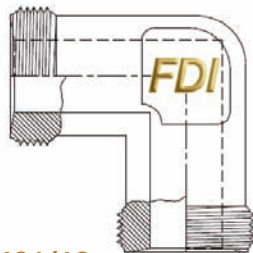
AS85421/10

Fitting, Adapter, Beam Seal, Male to Flareless



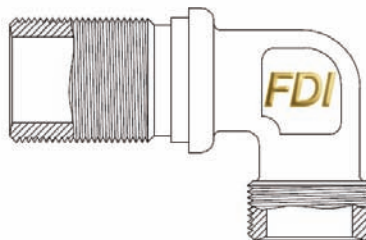
AS85421/11

Fitting, Union, Beam Seal, Male Ends



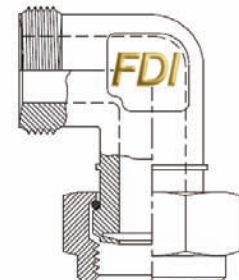
AS85421/12

Fitting, Elbow, 90°, Beam Seal, Male to Male



AS85421/13

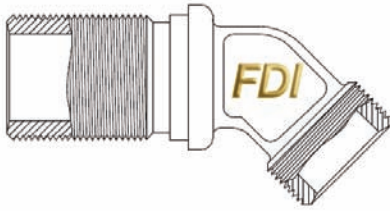
Elbow, 90°, Beam Seal, Bulkhead, Male Ends



AS85421/14

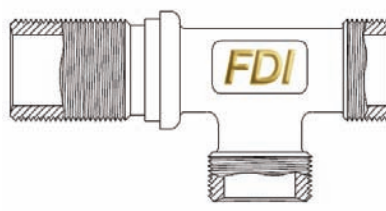
Fitting, Elbow, 90°, Beam Seal, Male to Female

High-pressure AS, MS, NAS and AN fittings and connections



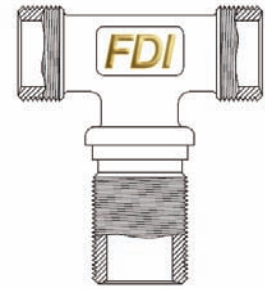
AS85421/15

Fitting, Elbow, 45°, Beam Seal, Bulkhead, Male Ends



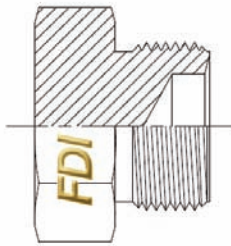
AS85421/16

Fitting, Tee, Beam Seal, Bulkhead on Run, Male Ends



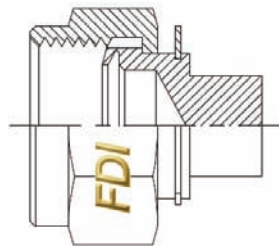
AS85421/17

Fitting, Tee, Beam Seal, Bulkhead on Branch, Male Ends



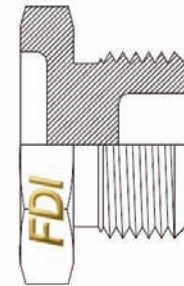
AS4213

Fitting, Plug, Beam Seal, Hydraulic



AS4216

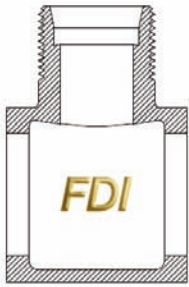
Fitting, Cap Assembly, Beam Seal, Hydraulic



AS9002

Plug, Machine Thread Drilled

High-pressure AS, MS, NAS and AN fittings and connections



NAS1237

Elbow, Universal 90°, Flareless



NAS1238

Elbow, Universal 75°, Flareless



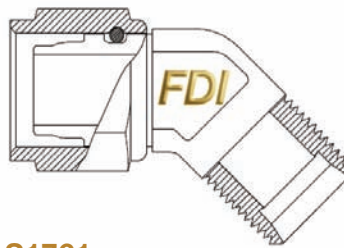
NAS1239

Elbow, Universal 45°, Flareless



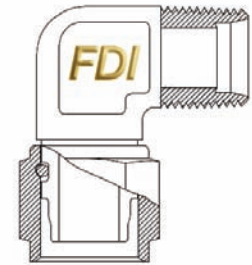
NAS1240

Tee, Universal, Flareless



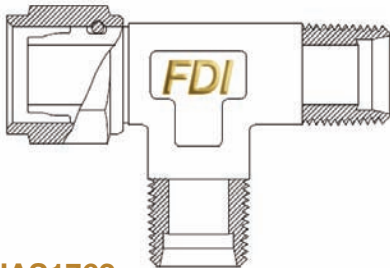
NAS1761

Elbow, Reducer, 45°, Flareless Tube to Swivel



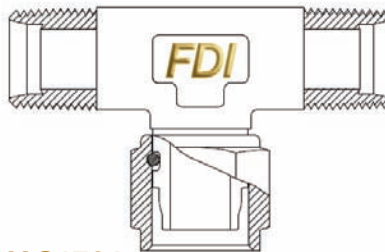
NAS1762

Elbow, Reducer, 90°, Flareless Tube to Swivel



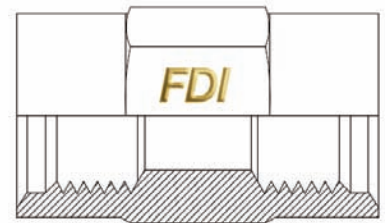
NAS1763

Tee, Reducer, Flareless Tube to Swivel



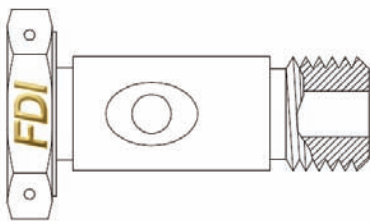
NAS1764

Tee, Reducer, Flareless Tube to Swivel, on Side



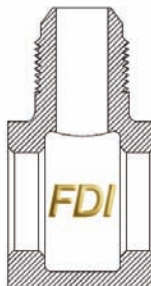
NAS424

Coupling, Tube, Flareless Fitting, Female Thread



NAS881

Bolt, Universal Fitting



NAS552

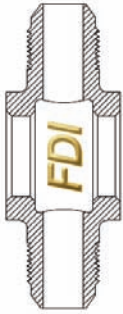
Elbow, Universal 90°



NAS553

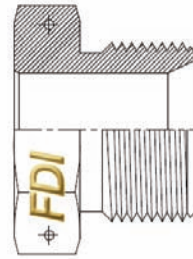
Elbow, Universal 15°

High-pressure AS, MS, NAS and AN fittings and connections



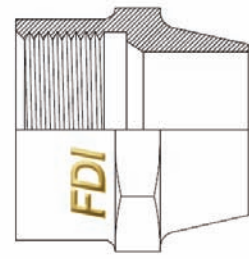
NAS555

Tee, Universal



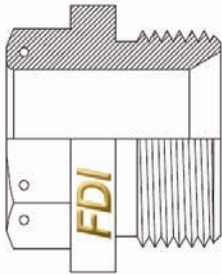
NAS591

Coupling, Rigid Tube Connector, Aluminum



NAS593

Nut, Rigid Tube Connector, Aluminum



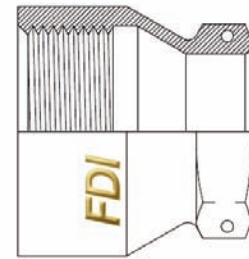
NAS594

Coupling, Rigid Tube Connector, Cres



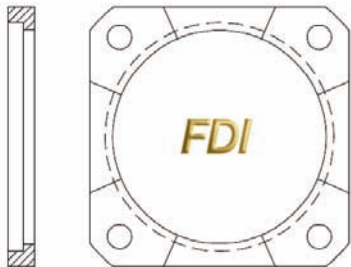
NAS595

Ring, Rigid Tube Connector, Cres



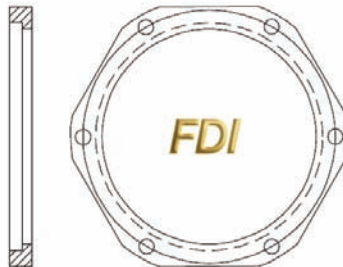
NAS596

Nut, Rigid Tube Connector, Cres



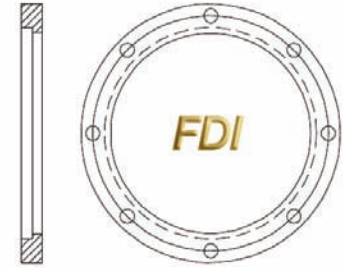
MS20756

Swivel Fitting Flange Size 12 through 32



MS20756

Swivel Fitting Flange Size 40 through 48



MS20756

Swivel Fitting Flange Size 56 through 112